



What you need to know about the Career-related Programme (CP)

About the International Baccalaureate

The International Baccalaureate (IB) is a not-for-profit foundation motivated by its mission to create a better world through education.



By offering exceptional international education programmes, the IB aims to develop inquiring, knowledgeable and caring young people who help to create a better and more peaceful world through intercultural understanding and respect.

The International Baccalaureate

- Founded in 1968
- Not-for-profit organization
- Offers four programmes
- Serves students aged 6 to 19 years
- 1.3 million graduates
- 147 countries



Directors General

Alec Peterson

G rard Renaud

Roger Peel

Derek Blackman

George Walker

Jeffrey Beard

Siva Kumari

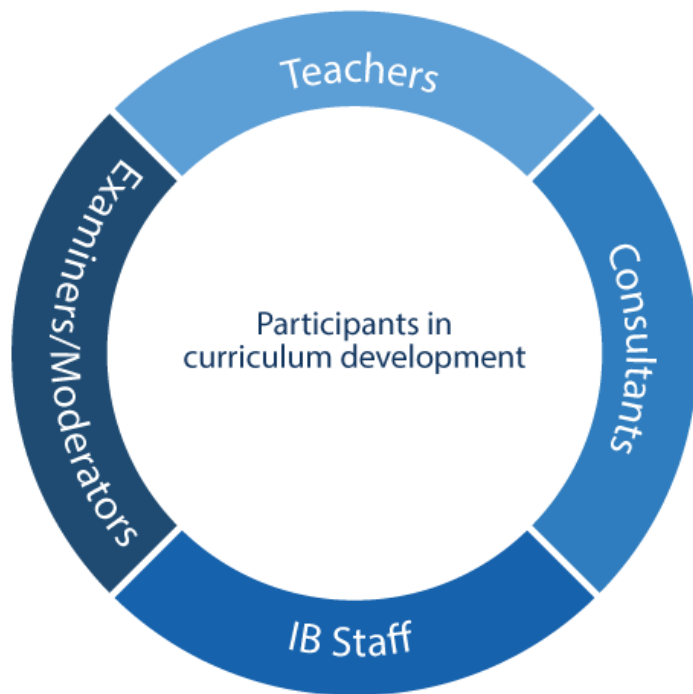
IB programmes

Our programmes encourage students across the world to become active, compassionate and lifelong learners who understand that other people, with their differences, can also be right.



A truly international curriculum

The process of curriculum development at the IB is another distinct characteristic of the organization. Implemented in collaboration with educators, staff and curriculum experts from around the world, the resulting programme curriculum is focused and develops students' international-mindedness, global awareness and subject-specific knowledge.



- The education committee of the Board of Governors manages overall academic policy across the four programmes
- Each programme has a programme committee, which is responsible for supervising the quality and development of the programme
- A published review cycle and timetable aims to ensure that the curriculum is relevant and up to date without the need for unexpected change
- Schools worldwide are encouraged to contribute by completing questionnaires and surveys, testing new materials, supplying experienced teachers to attend curriculum review meetings, and commenting on draft guides
- The IB also produces teacher support materials such as sample exam papers, lessons, projects and samples of assessed student work

The IB learner profile

The IB learner profile is the IB mission statement translated into a set of learning outcomes for the 21st century.

As IB learners, we strive to be:

- inquirers
- knowledgeable
- thinkers
- communicators
- principled
- open-minded
- caring
- risk-takers
- balanced
- reflective



The IB learner profile





International

Career-related

Innovative Language development

Personal and professional skills

Service learning

Academic courses from

Diploma Programme



The Career-related Programme (CP) is a unique international education programme that:

- prepares students both professionally and academically
- develops students to become global citizens
- fosters attitudes and habits of mind to allow students to become lifelong learners
- reduces the “academic vs practical” divide.

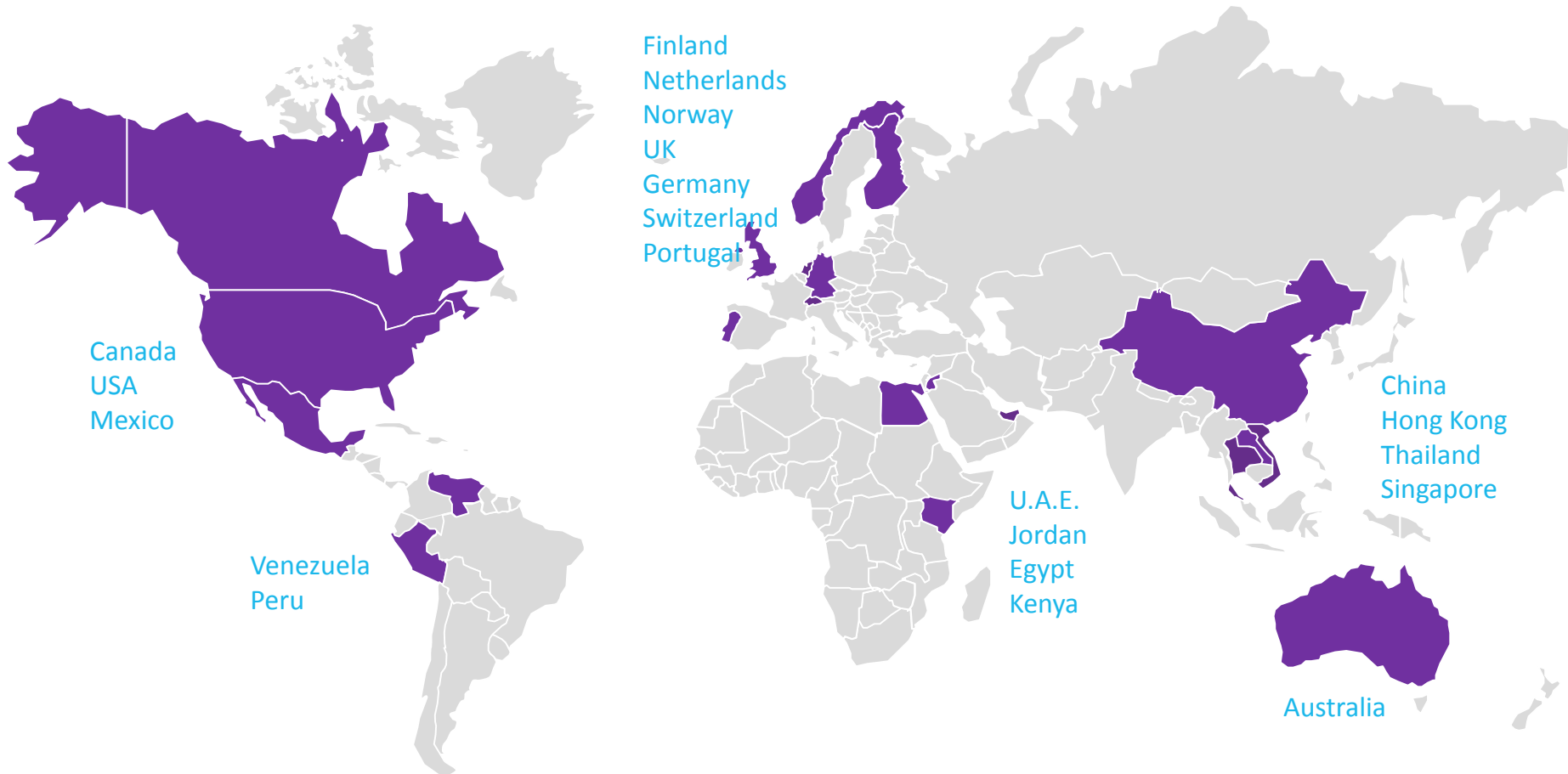
CP graduates are equipped to pursue:

- further education
- higher education
- employment
- apprenticeships.

“The mix of traditionally academic and career-related courses has seen a rapid holistic development of our young people and given them a set of skills to take into the next phase of their lives. At the Academy, we have used the CP to raise aspirations.”

Sian Carr, Head of School
Skinners' Kent Academy, UK

The CP in 21+ countries



Core components of the CP

All CP students are required to complete the career-related courses associated with their selected career pathway and take at least two Diploma Programme (DP) courses. Additionally, they must complete the CP core in order to receive the International Baccalaureate Certificate of the Career-related Programme.



Language development: A central tenet of an IB education, language development ensures students have access and are exposed to a second language in order to increase their understanding of the wider world and enhance their skillsets within a highly competitive global workforce.

Personal and professional skills course: This course aims to develop responsibility, practical problem-solving, ethical understanding, perseverance and an appreciation of identity and perspective, as well as understanding of the complexity of the modern world.

Service learning: Practical application of knowledge and skills towards meeting an identified community need enables students to develop and apply personal and social skills in real-life situations involving decision-making, problem-solving, initiative, responsibility and accountability.

Reflective project: The reflective project is an in-depth body of work submitted towards the end of the programme. Students identify, analyse, discuss and evaluate an ethical dilemma associated with an issue from their career-related studies.

A flexible educational framework

With the CP, schools are able to create their own distinctive version of the programme and select career pathways that suit their local community needs. By meeting the needs, backgrounds and contexts of their student population, schools can offer an education that is relevant to their students.



Career-related studies

Schools select the career pathways they want to offer, such as:

- business
- engineering
- health and bioscience
- arts and design
- sports management.

Diploma Programme courses

All CP students are required to take at least two DP courses. Typically, the DP subjects selected align with students' chosen career pathway.

Identifying and collaborating with career-related studies providers

The IB works with a variety of career-related-studies (CRS) providers around the globe. Schools seeking to develop career pathways with professional communities can benefit from our existing collaborations.

All CRS providers undergo a rigorous curriculum evaluation to ensure that their courses align with the CP pedagogy and meet IB quality standards.



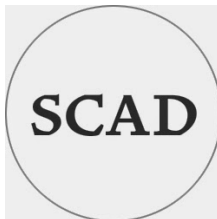
National Academy Foundation (NAF)



Business & Technology Education Council (BTEC)



Project Lead The Way (PLTW)



Savannah College of Art & Design (SCAD)



Chartered Institute for Securities & Investment (CISI)



Institute of Chartered Accountants in England and Wales (ICAEW)

Coming Soon

Aligning the CP with a selected career pathway



Example 1: Engineering

Career-related studies

Schools work with career-related-studies providers in engineering, such as **National Academy Foundation**. Types of subjects that may be offered include:

- foundations of engineering
- engineering concepts
- engineering applications.

Diploma Programme courses

Students choose from the recommended DP courses that align with their selected career pathway.

- Computer science
- Design technology
- Mathematical studies
- Chemistry

Aligning the CP with a selected career pathway



Example 2: Biomedical science

Career-related studies

Schools work with career-related-studies providers in biomedical science, such as **Project Lead the Way**. Types of subjects that may be offered include:

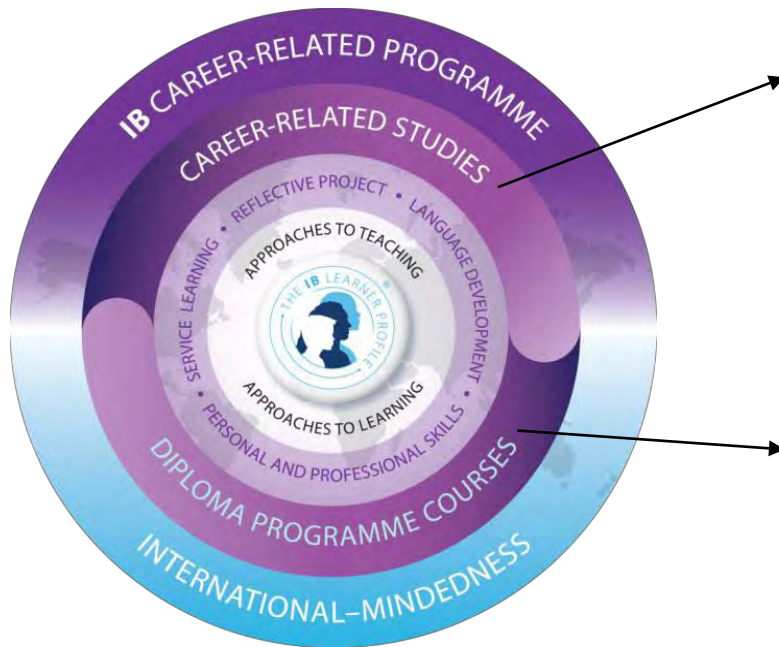
- biomedical sciences
- biomedical interventions
- biomedical innovation.

Diploma Programme courses

Students choose from the recommended DP courses that align with their selected career pathway.

- Biology
- Chemistry
- Mathematical studies
- Mathematics

Aligning the CP with a selected career pathway



Example 3: Accounting

Career-related studies

Schools work with career-related-studies providers in accounting, such as **ICAEW**. Types of subjects that may be offered include:

- principles of tax
- business and finance
- assurance.

Diploma Programme courses

Students choose from the recommended DP courses that align with their selected career pathway.

- Business management
- Computer science
- Mathematical studies
- Economics

Aligning the CP with a selected career pathway



Example 4: Art and design

Career-related studies

Schools work with career-related-studies providers in art and design, such as **SCAD**. Types of subjects that may be offered include:

- colour theory and application
- creative thinking strategies
- design: 3D form in space.

Diploma Programme courses

Students choose from the recommended DP courses that align with their selected career pathway.

- Visual arts
- Design technology
- Psychology
- Business management

Aligning the CP with a selected career pathway



Example 5: Business

Career-related studies

Schools work with career-related-studies providers in business, such as **OCR Cambridge Technical**. Types of subjects that may be offered include:

- marketing for business
- law in the business world
- human resource management.

Diploma Programme courses

Students choose from the recommended DP courses that align with their selected career pathway.

- Business management
- Computer science
- Economics
- Mathematical studies

Aligning the CP with a selected career pathway



Example 6: Finance

Career-related studies

Schools work with career-related-studies providers in finance, such as **CISI**. Types of subjects that may be offered include:

- introduction to investment
- money, economies and uncertainty
- investment decision-making
- accounting and governance.

Diploma Programme courses

Students choose from the recommended DP courses that align with their selected career pathway.

- Business management
- Computer science
- Economics
- Mathematical studies

What makes CP students unique?

- They can apply their knowledge to real-world scenarios and situations
- They have a strong foundation of academic and career-related skills
- They can think critically and creatively
- They develop superior research and presentation skills
- They communicate clearly and effectively
- They consider new perspectives and other points of view
- They are internationally minded and globally aware



Most popular career-related studies in CP schools

- 1 Business management (53% of schools)
- 2 Engineering (36%)
Medical (35%)
IT/programming (31%)
Visual/performing arts/photography (28%)
- 3 Health and social (13%)
Culinary (11%)
Architecture/building/construction (10%)
Education (10%)
Sports (10%)
Media (10%)

What are people saying about the CP?

"The CP opened my eyes to the number of opportunities that are out there and made me realise that university wasn't my only option. I am a practical learner so an apprenticeship is best suited to me and I am really excited to be able to gain so many more skills."

CP graduate
Dane Court Grammar School

"Our students end up with an incredible academic package but the real beauty of it is probably the Core element which underpins all the individual academic studies the students learn."

Vicki Willis, Deputy Head Teacher
King Ethelbert School

"The CP enables a school to open up the IB experience to a much wider range of students. I think part of why our first cohort was so successful when applying to university was because they stood out from other candidates. Most universities value breadth and these students show they have it. It is also ideal for students considering applying for European universities, as having the CP will give them a distinct head start."

David Barrs, Head Teacher
The Anglo European School in Essex

"The CP really blended nicely with the career academies we already had in our district, over 270 of them. It was a perfect marriage for us, as it opens access to more students and gives us the opportunity to diversify our IB programmes. Students who wanted to be in a career focused programme didn't feel the IB was aligned with what they were trying to do. Now that we offer the CP is awesome, because an IB education is the best opportunity for all kids. Being able to offer that to students who historically wouldn't have had that opportunity is amazing."

Dr. Joseph Lee, Superintendent
Palm Beach County Schools



Benefits of the CP seen at schools around the world

Raised student aspirations

Students become more inspired and enhance their prospects for the future.

University access

The CP increases progression into university.

Student engagement

Students, otherwise disengaged, become focused and motivated.

Student retention

CP schools report improved retention of students to date.

Community involvement

Employers and local community collaboration increases.

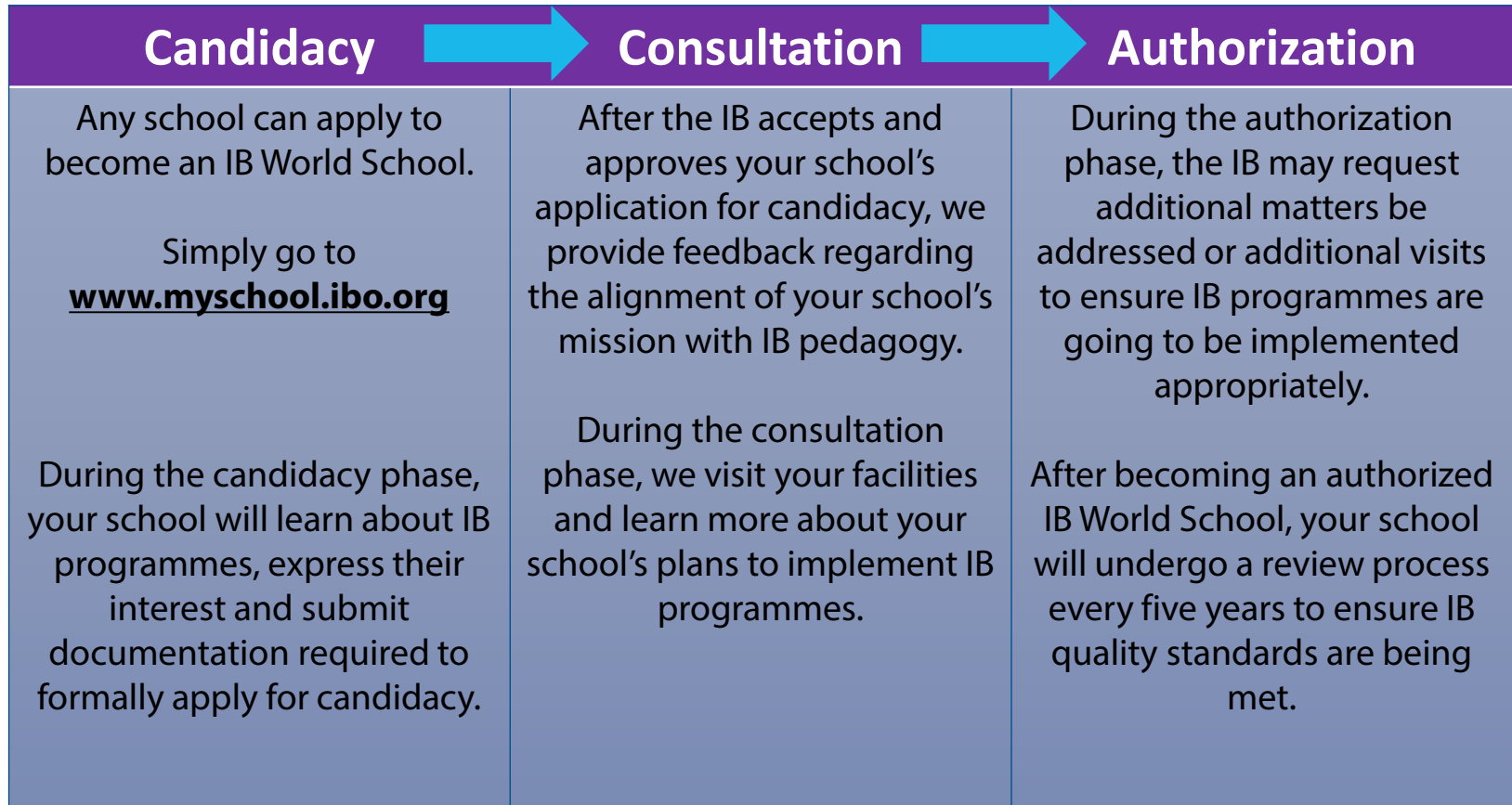
What's the future like with CP?

Schools around the world continue to apply for Career-related Programme authorization, which means more students can take advantage of an IB education and be better equipped to overcome the challenges of the 21st century.

School faculty can benefit from a variety of new professional development workshops that are available face-to-face and online. Educators find that IB pedagogy gives them the leadership opportunities to impact a student's life and really make a difference.

The IB continues to collaborate with universities, employers and local communities to bring valuable educational programmes to a broader range of students.

How to become an IB World School



Want to learn more about the Career-related Programme?

- Visit the [CP web page](#)
- [Download](#) the CP brochure
- Contact an IB regional office:
 - Africa, Europe, Middle East: ibid@ibo.org
 - Asia-Pacific: ibid@ibo.org
 - The Americas: iba@ibo.org